

CERTIFICATE OF LOCATION OF GOVERNMENT CORNER

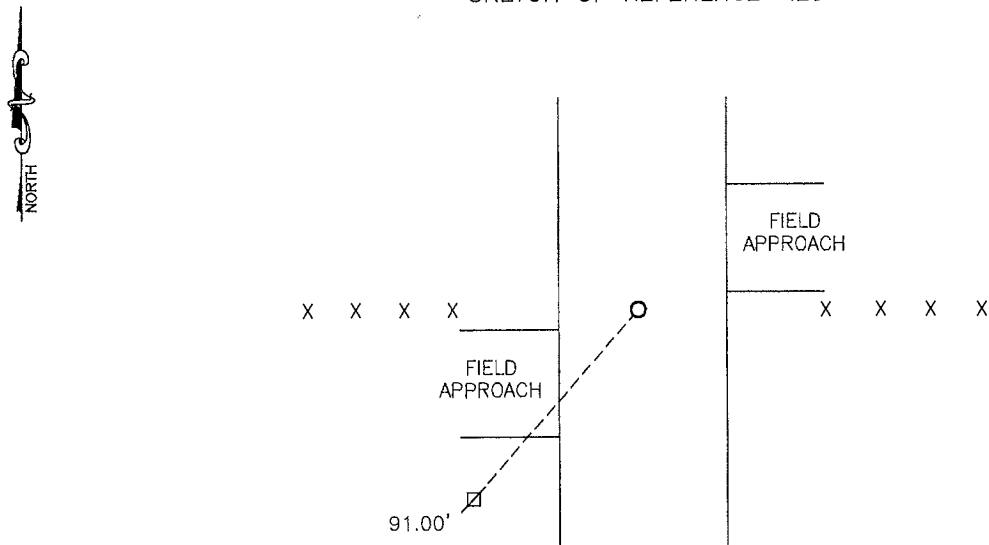
EAST QUARTER Corner of Section 4, Township 106, Range 40, 5TH P.M.

STATE OF MINNESOTA, County of MURRAY

At the corner location shown on the sketch:

- On _____ found a _____
DATE
- left monument as found, lowered monument, removed monument (explain)
- On 5/23/13 placed a survey spike w/seal #50343
DATE

SKETCH OF REFERENCE TIES



Minnesota State Plane Coordinate
 System Murray County Datum
 NAD83 (1996)
 N: 160848.584
 E: 532536.810

Nail and survey marker in utility pole SW 91.00'

Statement of evidence relative to this corner location is on back of page.

I hereby certify that this document and the data contained herein was prepared by me or under my direct supervision.

[Signature] 2/4/14
 SIGNATURE DATE

Registration No. 50343

- Land Surveyor, Professional Engineer
- County Surveyor, County Engineer

OFFICE OF THE COUNTY RECORDER

County of _____

I hereby certify that this document was filed in the Co. Recorders office at _____ .M on the _____ day of FEB 5 2014 A.D. 20____

County Recorder James V. Johnson

By _____, Deputy

DOCUMENT NO. _____

Statement of Evidence

In 1861, D.W. Wellman and S.S. Smoot did the original subdivision of the township.

In 1910, J.W. Woolstencroft shows a stone at the corner.

On May 23, 2013, Bueltel-Moseng Land Surveying set a survey spike with seal #50343 on line and single proportionate distances between the section corners. It is in line with fence to west and east and 2'± west of centerline of road.